



# Advent's Sage 200 Add-ons

Developed Exclusively by Advent



## Financial Add-ons for Sage 200

<b>Add-on Overview</b>	<b>Add-on Benefits</b>	<b>How does the Add-on Work?</b>
------------------------	------------------------	----------------------------------

### Add-on: Supplier Second Reference (MOD01)

This is a simple add-on that will automatically number supplier invoices using a pre-defined numbering sequence.

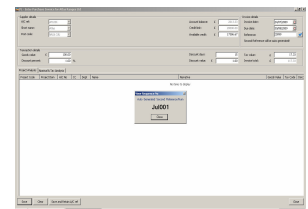
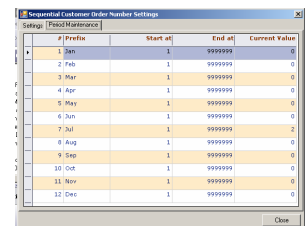
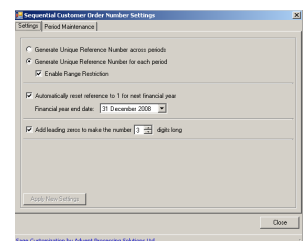
Many businesses will keep a manual sequential filing system for Purchase Invoices.

This add-on will eliminate the need to keep a separate filing system and will make finding invoices much easier.

In the settings, you can specify whether you would like the system to generate unique references across period or for each period, automatically reset the reference to 1 for the next financial year and whether or not you require leading zero's on the sequential number.

You can also specify whether you would like to Prefix the number (e.g. Jan001, Feb001) and here you can also specify the start and end numbers.

Once the above settings are in place, you can then enter your Supplier's invoice as normal and the sequential number will pop up once you click Save.



### Add-on: Transaction Enquiry Grid Extender (MOD19)

This is a simple add-on that enables you select additional fields to add to the Sales and Purchase Ledger Transaction Enquiry screens.

This add-on works hand-in-hand with the Supplier Second Reference.

You can now add the Supplier Second Reference onto the Transaction Enquiry screen and you can then sort the transaction by this reference, making it easy to find a supplier invoice.

In the settings area, simply select the Ledger (Sales or Purchase) and then select the field you wish to add from the drop-down list.

You can also specify what position you would like this field to take on the enquiry screen.

